



I. T. SET UP OF BANKS- DATA CENTER

BY CA. UDAY KULKARNI



Disclaimers

- These are my personal views and can not be construed to be views of ICAI or of U V K & Associates Chartered Accountants.
- These views do not and shall not be considered as professional advise.
- The views are CBS application & architecture independent.



CBS

- Central Servers & Central Data Processing.
- Number of Delivery Channels.
- Any branch banking. One Bank Concept.
- Improved Reporting (MIS & Other) at bank level.
- Changes in operations/functions or BPR.



CBS Set up

- Business Strategy
- IT Strategy
- Technology & Technical Architecture.
- IT Organization & Operations
- Set Up of Data Center & Data Center Operations
- Centralized Banking Application Operations.
- Support systems
- Database Operations
- Network Operations
- IT security Operations



Data Center

- Server Room
- Server Racks
- Servers & Storage
- Electricity Supply
- Cooling System
- Network Components
- Database
- Channel Switch
- Security Equipments



Data Center - Standards

- ISO/IEC- 27001, 27002
- PCI-DSS
- SOX
- BICSI 002
- TIA 942
- ----- & others-



TIA-942

- Classification of Data Center- tier based
- Tiers based upon-
 - DC availability time
 - Architectural, Security, Electrical details
 - Redundant Component
- Tier-1- Basic, huge downtime, single power and cooling path, no redundancy.
- Tier-2-N+1 Redundancy, huge downtime, single power and cooling path
- Tier-3- Less downtime, N+1 Redundancy, Multiple power and cooling path.
- Tier-4- very little downtime Multiple power and cooling path, N+1, N+N redundancy.

Server Room

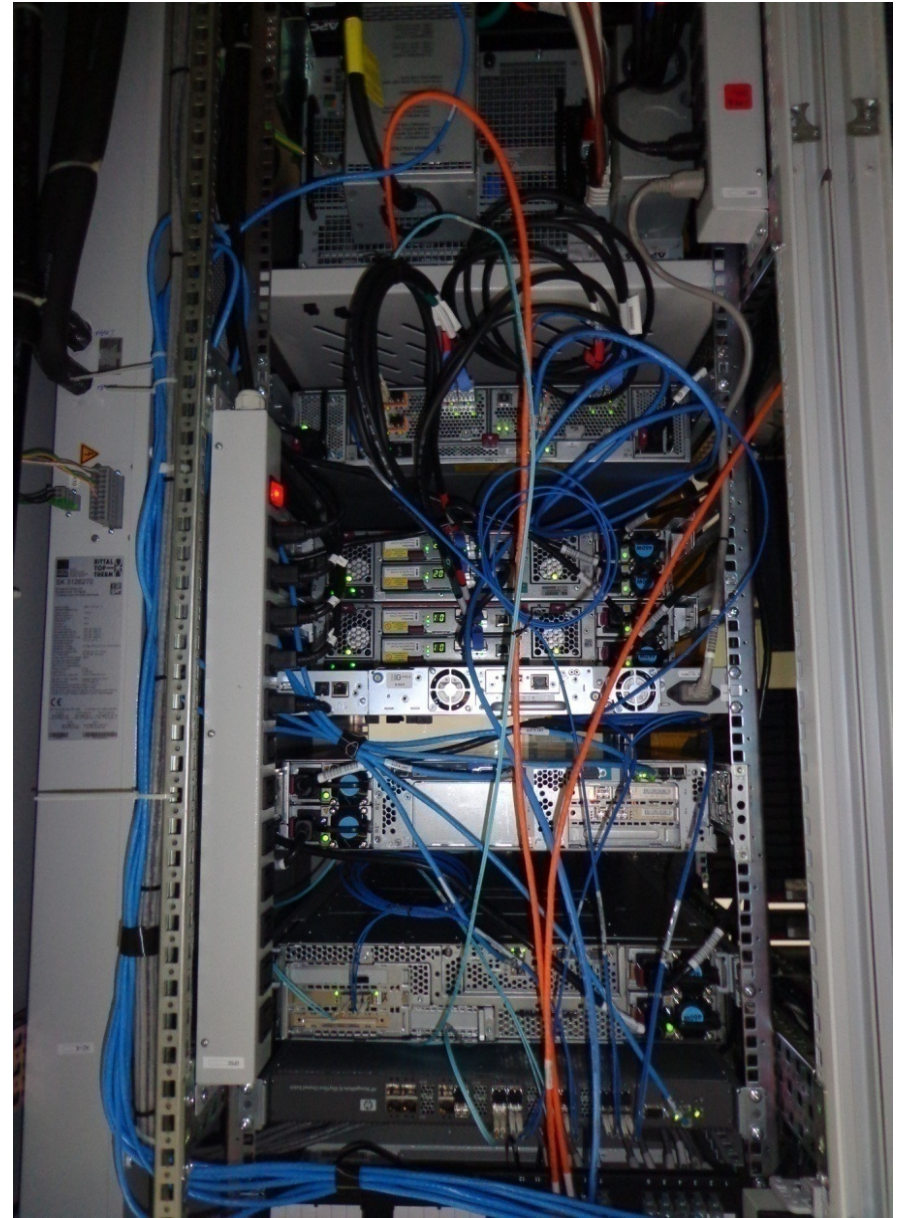
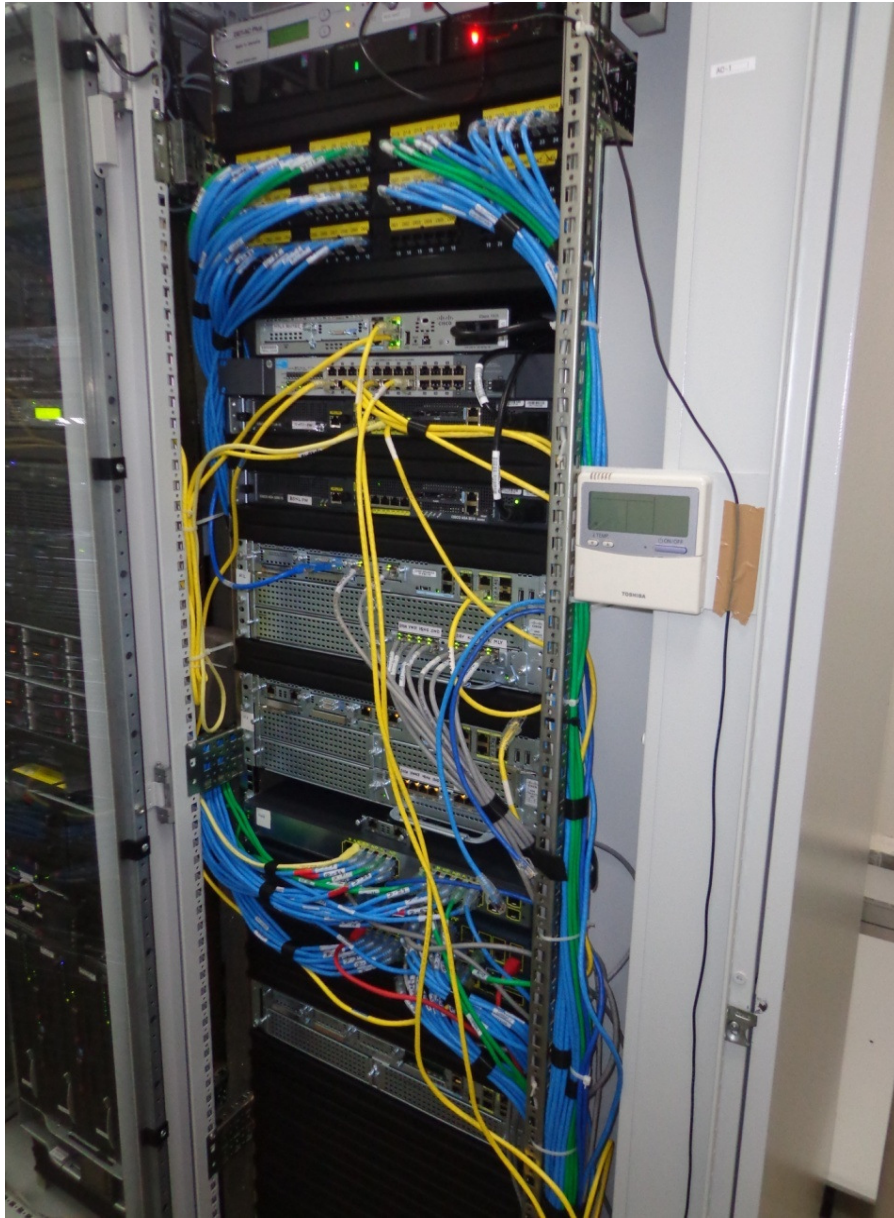


Server Room

- Types of server Room
 - Integrated
 - Modular
 - Specially Built
- Space- location – natural calamity, emergency services access.
- Heating, Ventilation, Air conditioning, system.
- Security Aspects- Physical Access Control-Biometric Devices



Server Racks



Server Racks

- Size of Server Racks- i.e. number of U
- Use of Server Rack
- Power Consumption per Rack
- Lock with Card Access- Unique PIN
- Fire & Water Leakage Detection within Rack
- Rack mountable fire detection and suppression system & its sufficiency.
- Rack Video Surveillance system



Electricity Supply

- Total Consumption of Electricity for Data Center- e.g. servers, cooling system, racks, telecommunication, general lighting etc.
- Independent Line of Electricity Supply-Isolated transformer.
- Electrical Panel – Compliance of country specific electrical codes.
- Generator
- ATS- Auto Transfer Switch with redundancy arrangement.
- Electricity Cabling.
- ASHLAE earthing along with copper earthing.



Electricity Supply

- UPS & its redundancy with SNMP interface for monitoring.
- Rack Mountable arrangements
- Battery Back up time period.



Cooling System

- Inbuilt air conditioner- auto switching.
- Uninterrupted power supply for cooling system.
- Refrigerant Gas- R-410A
- Temperature Monitoring
- Outside Temperature Monitoring.



Servers

- Technical Architecture
- Server Sizing
- Rack Server or Blade Servers
- Database Servers
- Application Servers
- MIS Servers
- Channel Servers
- Load Balancing
- Use of Virtualization



Servers

- Antivirus Software and licenses
- Up-dation of antivirus
- Configuration of OS- use of security features
- Domain Creation and logical access controls
- Server Downtime- reasons
- Server overheating during power failure.
- Server Performance- Use of CPU, Processing speed.
- Maintenance Plan
- Back up servers



Servers- Storage



Servers- Storage

- Storage – Production & Back up
- RAID- Redundant Array of Independent Disks.
- RAID level configuration-
 - Striping – writing in all disks by file distribution
 - Mirroring- disks maintains identical data simultaneously.
 - Disk Stripping & Mirroring- Redundancy with high performance.
- Server Storage Configuration-
 - Direct Attached Storage-*DAS*
 - Network Attached Storage- *NAS*
 - Storage Area Network-*SAN- Mostly used- high processing power with high performance*



Servers- Storage

- Storage Management Architecture
- Software version, its licenses
- Patch up-dation procedure
- Verification of Storage configuration.
- Access controls
- Performance Monitoring.
- Encryption of data at rest.



Virtualization

- Virtualization architecture.
- Interface with Other environment.
- Hypervisor software, license, latest version & up-dation with patches.
- Redundancy of Hypervisor with license.
- Configuration details for features enabled/disabled.
- Access controls- Change of root default password.
- Performance (IOPS) – data size, network & communication protocol, CPU processing etc.- use of Vmware Capacity Planner.
- Security Monitoring with IPS (Intrusion Prevention System)
- Defining the security zone in firewalls.



Database

- Database Application- Oracle/SQL
- Oracle Database edition-standard/Personal/Enterprise- check available features.
- SQL database Editions- Enterprise/Standard/Business Intelligence.
- License types- no of user/instances/cores covered under each license.
- Installation and utilization of licenses.
- Payment terms for annual services- Patch availability.
- Patch updation process and its performance.



Database

- Objects-
 - Tables- Data value
 - Stored Procedure/ Functions
 - Trigger- Procedural code that is called when a table is modified.
 - Index - Mechanism to provide fast lookup of data.



Database

- DBA & Support team.
- Data size monitoring.
- Logical Access-
 - Database server OS access control
 - Roles & Responsibilities of various DBA & support team users.
 - Status of Default users.
 - Password policy for Default users.
 - Connectivity to other servers & users.
 - Number of instances mapped for each users.



Database

- Enable Password Management Capacities.
- Verification of Password Profile for each user.
- Database Privileges Statements- Grant / Revoke available to appropriate authority.
- Database permissions group wise or user wise.
- Encryption – data at rest stage.
- Database Monitoring tools- built in or third party.
- Configuration of listener- listener.ora file.
- Password protection for listener.

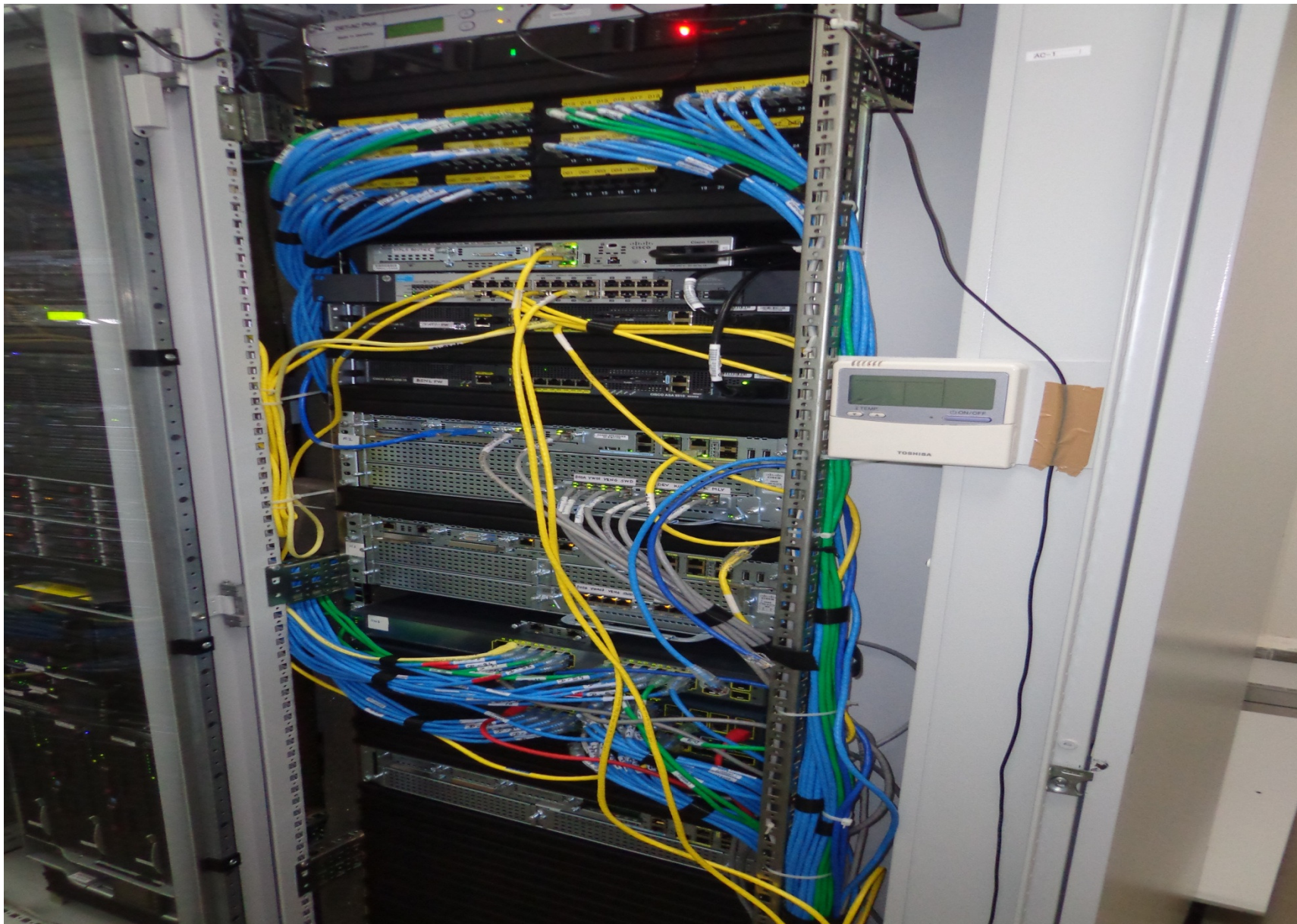


Database

- Configuration-
 - OEM- oracle enterprise Manager settings
 - Auto Maintenance Task settings
 - Block size
 - Processors
 - No of Data files, redo logs etc
 - Connection mode
 - Advanced Security Options
 - Archive log enable/disable & its back up
 - Net Configuration file settings
 - Table space alerts.
 - Number of tables
 - RMAN back up and its destination
 - SYS audit status – enable/disable
 - Alert logs in AWR
 - Procedure/ functions setting if any



Network



Network

- Network Architecture details – connectivity to branches- POS- ATM etc.
- Routers & Firewall Configuration.
- Redundancy of Routers.
- Logging of AAA & System events configuration
- Configuration of NTP - Network Time Protocol.
- Configuration of Banner- router private property.
- Spanning Tree Protocol attack mitigation enabled.
- Configuration to save core dumps.
- Network Monitoring tools- licenses.
- SSH enable/disable- protection for a network from attacks such as IP spoofing, IP source routing, and DNS spoofing.



Network

- Firewall Configuration-
 - All packets except defined headed and address are to be denied by default.
 - Firewall rules setting
 - Outside Security levels
 - Inside Security levels
 - DMZ Security levels
 - Coverage in firewall for internet.
 - IP address management
 - Encryption of Data in Motion



Interfaces

- Core Database with other Database e.g. SFMS database
- Connectivity to Switch
- Configuration for RTGS/NEFT/ Foreign Transactions.
- Use of Message Queue internal/external –e.g. IBM MQ





Thank You

CA. UDAY KULKARNI

