

# PROVISIONS, CONTINGENT LIABILITIES AND CONTINGENT ASSETS (AS 29)

PRESENTATION BY :  
CA MAYUR CHOKSHI

CA MAYUR CHOKSHI , Mumbai : e-Mail : mayur@mcncnco.in : Website : www.mcncnco.in

## IAS 37 Applicability

The requirements of AS 29 are applicable to recognition & measurement of all provisions, contingent liabilities, and appropriate accounting for contingent assets *except*

- (a) Fin Instruments that are carried at FV
- (b) Those resulting from executory contracts except where the contract is onerous contracts
- (c) Insurance companies
- (b) Those covered by other Standards

CA MAYUR CHOKSHI , Mumbai : e-Mail : mayur@mcncnco.in : Website : www.mcncnco.in

## Exclusion

- Construction contracts ( AS 7)
- Income taxes ( As 22)
- Leases (onerous leases are covered by AS 29.)
- Employee benefits AS 15)
- Insurance contracts (However, AS 29 still applies to other than those arising from its contractual obligations and rights under insurance contracts covered )
- Financial instruments (including guarantees) , if not carried at FV

CA MAYUR CHOKSHI , Mumbai : e-Mail : mayur@mcncnco.in : Website : www.mcncnco.in

## Executory Contract

Executory contracts are contracts under which neither party has performed any of its obligations or both parties have partially performed their obligations to an equal extent.

*This Standard does not apply to executory contracts unless they are onerous.*

CA MAYUR CHOKSHI , Mumbai : e-Mail : mayur@mcncnco.in : Website : www.mcncnco.in

## Provision

liabilities that can be measured only by using a substantial degree of estimation“provisions”

Whether following are provisions :

- Provision for Depreciation
- Provision for Bad Debts
- Provision for O/S Expenses
- Provision for Bonus
- Creditors

None of the above are provisions

*Although it is sometimes necessary to estimate the amount or timing of accruals, the uncertainty is generally much less than for provisions.*

CA MAYUR CHOKSHI , Mumbai : e-Mail : mayur@mcncn.in : Website : www.mcncn.in

## Provision- Conditions

IFF all conditions are fulfilled : -

- a) An entity has a *present obligation resulting from a past (obligating) event*;
- (b) It is *probable that an outflow of resources embodying economic benefits would be required to settle the obligation*; and
- (c) A *reliable estimate can be made of the amount of the obligation*.

CA MAYUR CHOKSHI , Mumbai : e-Mail : mayur@mcncn.in : Website : www.mcncn.in

## Obligation –

**An *obligating event* is an event that creates a legal or constructive obligation that results in an entity having no realistic alternative to settling that obligation. Based on evidence available on the BS date and that it is probable i.e. more likely than not.**

Legal or Normal Business Practice Obligation

Legal Obligation : is an obligation that could

- (a) Be contractual; *or*
- (b) Arise due to a legislation; *or*
- (c) Result from other operation of law.

CA MAYUR CHOKSHI , Mumbai : e-Mail : mayur@mcncio.in : Website : www.mcncio.in

## *Case Study – Past events & Obligating Events*

- Clean- Up costs
- Decommissioning Costs
- Future Losses
- Law Suits
- Identity Not known
- Warranties
- Due to proposed law, that have yet to be finalised

CA MAYUR CHOKSHI , Mumbai : e-Mail : mayur@mcncio.in : Website : www.mcncio.in

## Measurement of Provision

*best estimate of the expenditure required to settle the present obligation at the balance sheet date*

If not possible to obtain a reliable estimate then it is to be disclosed as Contingent Liab .

- ✓ *Best Estimate based on past experience*
- ✓ *If group of items > Expected Value*
- ✓ *If single item > Most likely outcome*

CA MAYUR CHOKSHI , Mumbai : e-Mail : mayur@mcncnco.in : Website : www.mcncnco.in

## Measurement of Provision

The entity's past experience with warranty claims is

- 60% of cars sold in a year have zero defects.
- 25% of cars sold in a year have normal defects.
- 15% of cars sold in a year have significant defects.
- The cost of rectifying a "normal defect" in a car is Rs.10,000 and for a "significant defect" in a car is Rs.30,000.

Find the Provision Req'd.

- $(60\% \times 0) + (25\% \times 10,000) + (15\% \times 30,000)$
- Provision Req'd = Rs. 7,000.**

CA MAYUR CHOKSHI , Mumbai : e-Mail : mayur@mcncnco.in : Website : www.mcncnco.in

## Measurement of Provision

- Remeasure at each B/S Date
- No provision for the future operating losses  
( However, impairment may be reqd)

Provision for an **onerous contract** where the unavoidable costs exceed the benefits expected (The excess unavoidable costs should be provided for at the time the contract becomes onerous)

CA MAYUR CHOKSHI , Mumbai : e-Mail : mayur@mcncnco.in : Website : www.mcncnco.in

## *Reimbursement*

- Reimbursement should be recognised when, and only when, it is virtually certain that reimbursement will be received
- Reimbursement be treated as separate asset
- The amount recognised for the reimbursement should not exceed the amount of the provision.
- Expense relating to a provision may be presented net of the reimbursement.
- Sometimes, full amt as liability and r'ble as asset, depending upon whose liability is it.

CA MAYUR CHOKSHI , Mumbai : e-Mail : mayur@mcncnco.in : Website : www.mcncnco.in

## Restructuring - Examples

- Sale or termination of a line of business
- Closure of business locations in a region or relocation of business activities from one location to another
- Changes in management structure, such as elimination of a layer of management
- Fundamental reorganization of the entity such that it has a material and a significant impact on its operations.

CA MAYUR CHOKSHI , Mumbai : e-Mail : mayur@mcncio.in : Website : www.mcncio.in

## Obligation - Restructuring

- No obligation arises for the sale of an operation until the enterprise is committed to the sale,
  - Binding Sale Agreement is a pre-requisite
  - To include only direct expenditure arising n restructuring (a) Only due to restructuring; and (b) not associated with ongoing activities.
  - Does not include: Retraining and Relocation of staff, marketing, invst in new stand dist network

CA MAYUR CHOKSHI , Mumbai : e-Mail : mayur@mcncio.in : Website : www.mcncio.in

## Contingent Liability

A contingent liability is a *possible obligation arising from past events, the outcome of which will be confirmed only on the occurrence or nonoccurrence of one or more uncertain future events*. A contingent liability is also a *present obligation that is not recognized, either because it is not probable that an outflow of resources will be required to settle an obligation or the amount of the obligation cannot be measured with sufficient reliability*

- Jointly and Severally liable for an obligation

CA MAYUR CHOKSHI , Mumbai : e-Mail : [mayur@mcncnco.in](mailto:mayur@mcncnco.in) : Website : [www.mcncnco.in](http://www.mcncnco.in)

## Contingent Assets

Contingent assets are *possible assets that arise from a past event and whose existence is confirmed only by the occurrence or nonoccurrence of one or more uncertain future events not wholly within the control of the entity*.

Virtual Certainty required

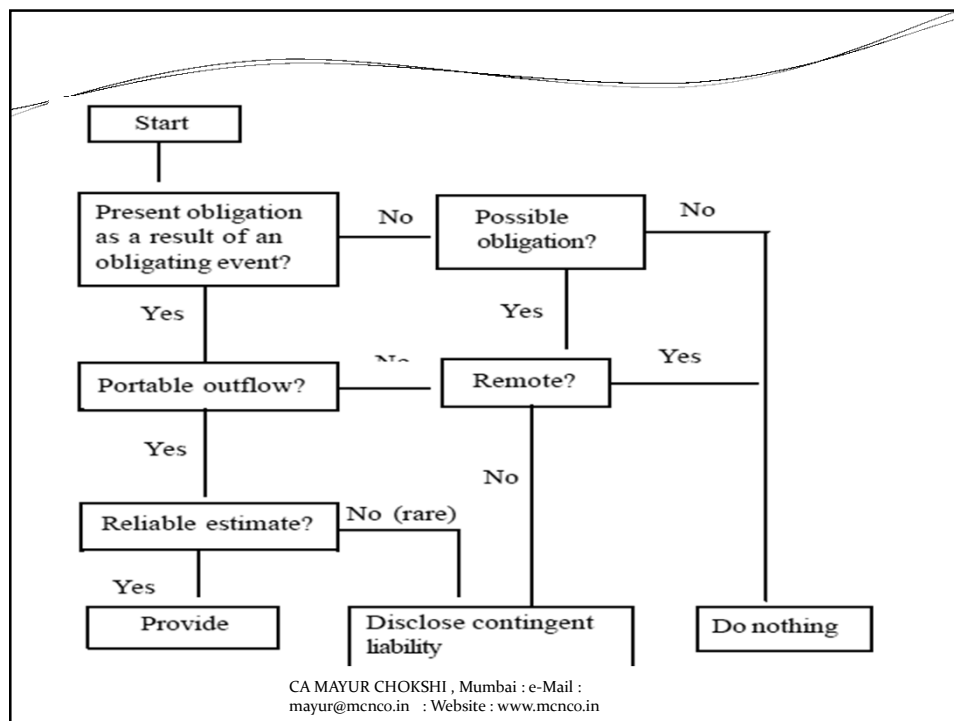
CA MAYUR CHOKSHI , Mumbai : e-Mail : [mayur@mcncnco.in](mailto:mayur@mcncnco.in) : Website : [www.mcncnco.in](http://www.mcncnco.in)



## EXAMPLES

- Warranties
- Reimbursements
- Refund Policy
- Legal Requirement to fit Smoke Filters
- Staff Retraining as a result of changes in Tax
- Guarantees
- Onerous Contracts
- Refurbishment cost – Legal Requirements

CA MAYUR CHOKSHI , Mumbai : e-Mail : mayur@mcnco.in : Website : www.mcnco.in



<b>Asset</b>	Virtually certain ( $\geq 90\%$ )	Recognize
<b>Contingent Asset</b>	Probable ( $\geq 50\%$ ) Possible ( $\leq 50\%$ ) Remote ( $\leq 10\%$ )	Disclose No Disclosure No Disclosure
<b>Liability</b>	Virtually Certain Probable (reliably measurable)	Recognize Recognize
<b>Contingent Liability</b>	Probable Possible Remote	disclose disclose do not disclose
CA MAYUR CHOKSHI, Mumbai : e-Mail : mayur@mcnco.in : Website : www.mcnco.in		

## Questions ?????

**CA MAYUR CHOKSHI**  
*Tibrewala House, 33, Swastic Soc, NS Road No 3, JVPD Scheme,  
MUMABI 400 056.*

**Be in touch through :**  
**E-mail : [mayur@mcnco.in](mailto:mayur@mcnco.in)**  
**WebSite : [www.mcnco.in](http://www.mcnco.in)**  
**Facebook : [www.facebook.com/mayur.chokshi](http://www.facebook.com/mayur.chokshi)**  
**LinkedIn : [in.linkedin.com/in/CAmayurchokshi](http://in.linkedin.com/in/CAmayurchokshi)**  
**Twitter : [www.twitter.com/mayurchokshi](http://www.twitter.com/mayurchokshi)**  
**Blog Link : [camayurchokshi.blogspot.com/](http://camayurchokshi.blogspot.com/)**

Convener of the Group “ **IFRS HUB** ” on **Linkedin.com**

CA MAYUR CHOKSHI, Mumbai : e-Mail : mayur@mcnco.in : Website : www.mcnco.in