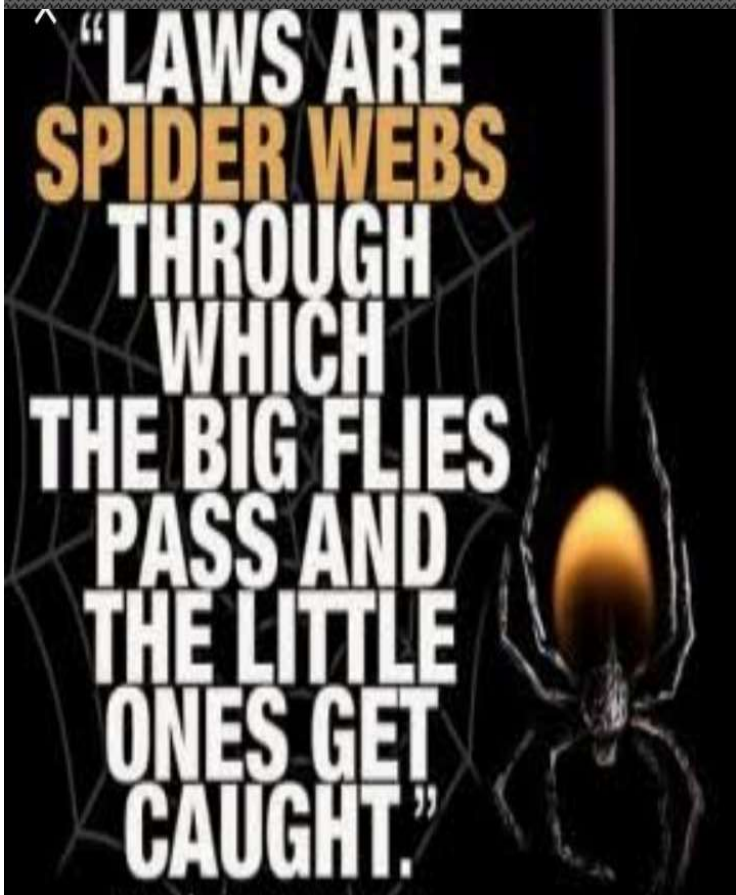


Issues & Changed Scenario under RERA

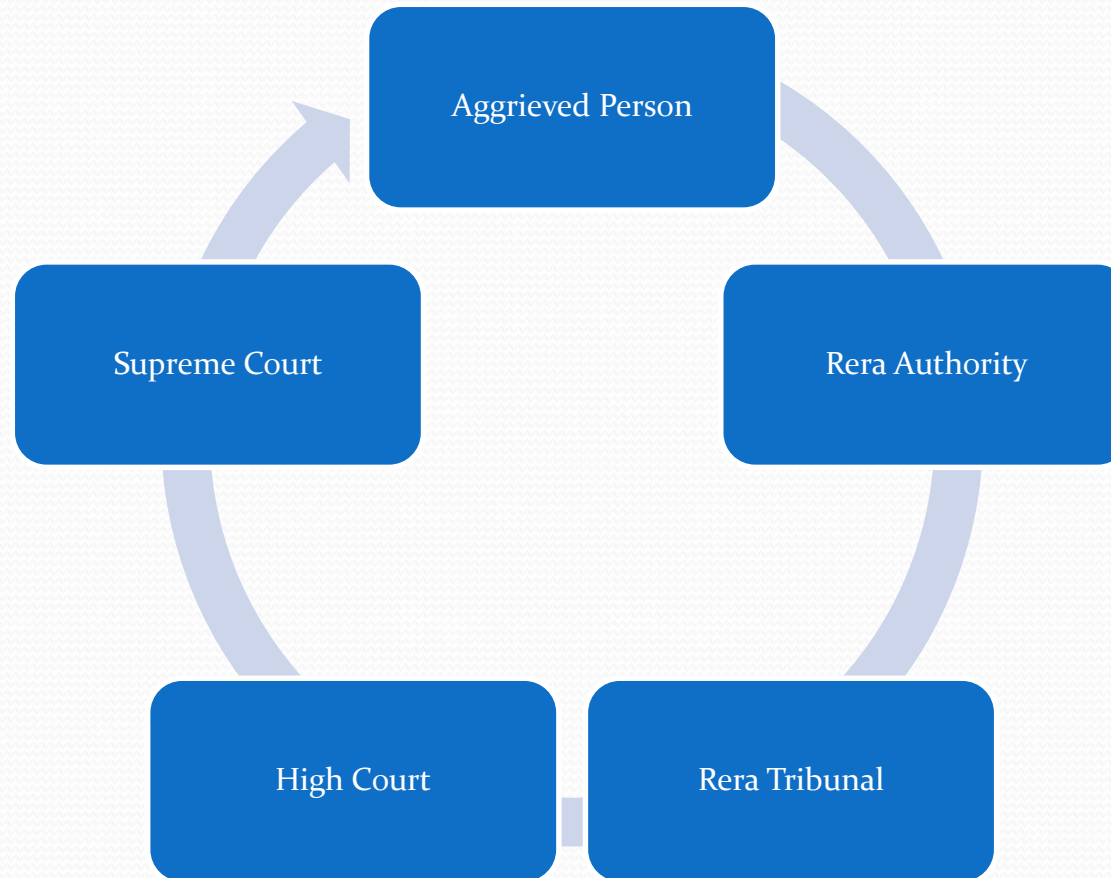


Presented by : CA Ashwin Shah

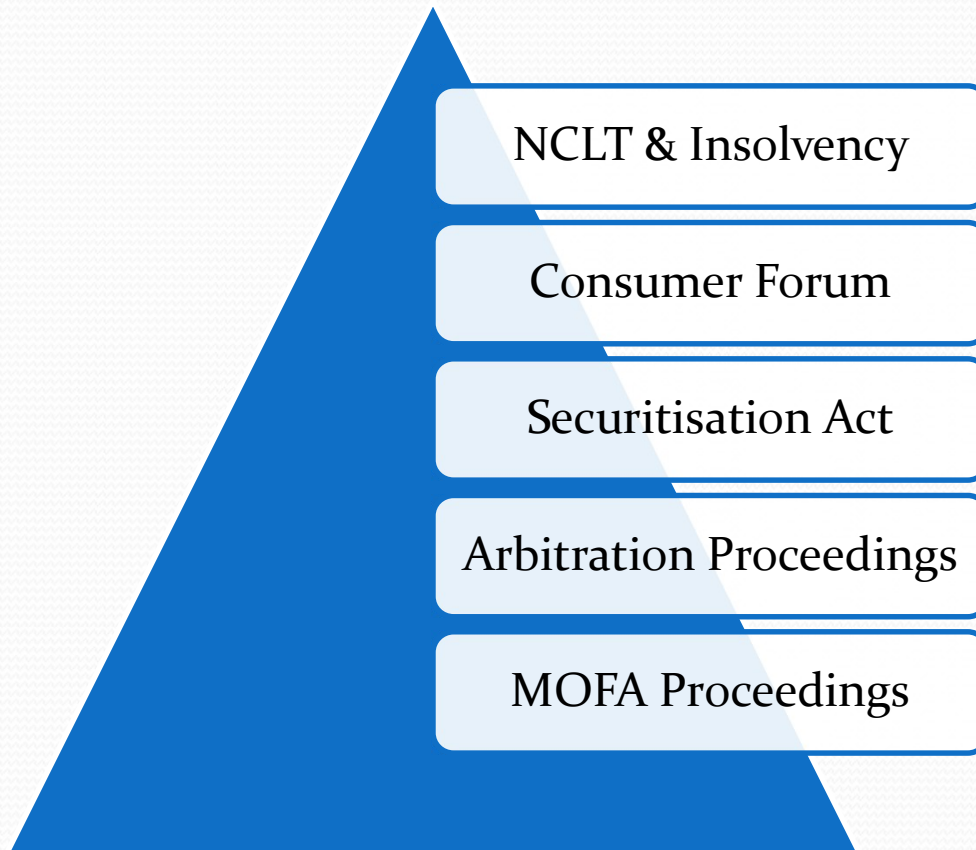
Disclaimer

- Intention is to provide easy understanding of the subject
- The Presentation is based on RERA Laws and Rules as it stands on the date of the presentation
- The possibility of human error may result technical inaccuracies, typographical or other errors
- This document should not be construed as consultation for taking any tax/business decision based on this document.
- The Presenter or Netra Realty Solutions Pvt Ltd (NRS) are in no way responsible for any loss arising due to reliance placed on this document
- All rights reserved. All contents created are owned by NRS or its affiliates for ease of understanding by the participants only. Unauthorized use is strictly prohibited.
- No part of this publication may be reproduced, distributed, or transmitted in any form or by any means, including photocopying, recording, or other electronic or mechanical methods, without the prior written permission of NRS.
- For view request of this presentation write at info@netrarealtysolutions.com

Judicial Hierarchy



RERA Vs Other Proceedings



Challenge to RERA

Challenge to Sec 3

Retrospective or Retroactive

Section 6 – Harsh Provisions

Sec 46 –Qualification of Judicial Member

Challenge to Section 18

Section 8 – Anti Promoter

Requirement of deposit to separate account

Penalties - Prospective

Definition

Memorandum of Understanding

Allotment Letter

Larger Public Interest

Allottees Vs Consumer / Investor

Allottee Vs Members/Tenants

Allottee Vs Land Owner' Allotment

Part Occupancy Vs Possession

Association of Allottees

Eye Opener Judgements

SC – Amrapali Group

Plot area or No. of Apartment

Secured Creditors & Insolvency proceedings

Sec15 – Old & New Developer

Constitution of Tribunal Bench

Express waiver

Sale of Parking Space

Section 43 (5) – Directory or Mandatory

NETRA REALTY SOLUTIONS PVT LTD

One Stop Solution

